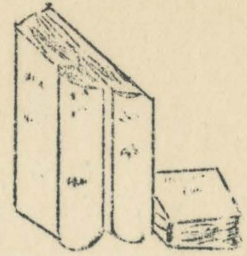




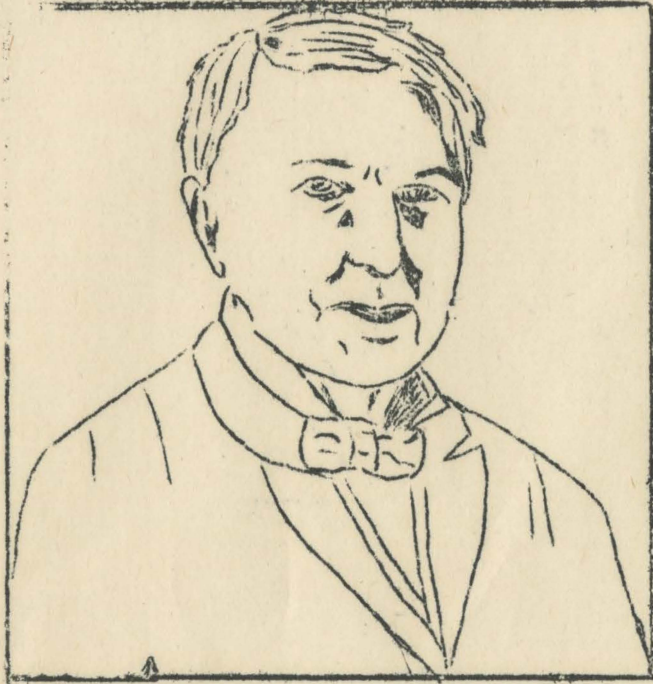
THE NEWS



Volume 8 - Number 2

Do It Well

October 23, 1931



Due Respect

One of the most impressive events we have experienced in some time occurred on Wednesday afternoon at three o'clock. At that time the bell rang and with one accord we, who were having classes, stood up and maintained silence for one minute. A fitting tribute to one as great as Thomas A. Edison.

Club Notes

Members of the A. A. went on a supper hike to Germantown on Monday, October 19, instead of holding their regular weekly meeting. Football, three-deep, and various other games were played during the course of the afternoon.

The Glee Club held its regular meeting last Wednesday at 4:30 in the Assembly Hall. Folk tunes were practiced by the group.

The Nature Club postponed its trip over the Nature Trail on Thursday be-

cause of rain. The club, however, held a meeting in the Assembly Hall where club songs were sung. The members later adjourned to the Frolic Room at the Hall where luncheon was enjoyed and games were played.

Mr. Case, a representative of the 4-H Clubs, addressed the members of the Rural Club at their regular meeting on last Thursday.

The club is planning to take a trip to Easton, Connecticut, shortly to observe some demonstrations by the 4-H Club.

The Forum asks: Do you know that:

1. In 1920 there were in the United States almost 5,000,000 people over ten years of age who could neither read nor write? At that time of the 28,000,000 children in the country between five and eighteen years of age, only 16,000,000 were regularly at school. At that time one child in fifty-four got a chance to go to college.
2. Australia will broadcast to America on Sundays between midnight to 2:00 A.M. 4:30 to 6:30 A.M., 2:00 to 4:00 P.M.?
3. In the United States there are at the present time 614 broadcasting stations of which 91 are owned by newspapers? In all of the countries outside of the United States, there are only 620 broadcasting stations. With a population of 122,000,000, then, the United States has almost as many broadcasting stations as the rest of the world with a population of approximately 1,906,000,000.
4. The state of Connecticut has the lowest percentage of sentenced Federal prisoners in jail, 1930-1931, of any state in the Union? Arizona has the highest percentage.

The Dee-N-esS is published by a new senior division each month. This month the Senior D's are in charge.
Editor -- Jeannette Watson
Assistant -- Emily Leahy

Don't Let Them Leave!

Just at this time of the year hundreds of children who have reached their fourteenth year are applying for working papers. Of course there are cases where it is absolutely necessary for a child to go to work to help support or entirely to support his family, but nine boys out of ten apply simply because they want to leave school. This raises the following questions: Why do children wish to leave school when there is no need? Are they misfits? Don't they get along well with their teachers and fellow pupils?

If the teachers and principals would spend a little time studying the causes "leading to the separation" and then try to interest the children in something to their liking, perhaps we could keep Young America in our schools instead of having the youngsters usurp positions to which heads of families have a right.

Alumnae Notes

Miss Grace Keeler, a June graduate, is now teaching a seventh grade in Rockville.

Miss Phoebe Kollogg and Miss Edna Richter are employed by the West Hartford School Board.

Miss Grace Stewart and Miss Evelyn Rowe were recent visitors at Fairfield Hall.

The Glenbrook School in Glenbrook has added Miss Josephine Miner, '30, to its staff.

Among the June graduates who have positions in Torrington are the Misses Elsa Walti, Virginia Zeiner, and Alice Fabro.

Miss Mary Irwin is teaching in East Manchester.

Faculty Notes

The Misses Russell, Tobias, Sanders, and Wagner visited the Exhibit of Colonial Furniture at Silver Mines Tavern.

Miss Baker attended the Army-Harvard game at West Point Saturday.

Mrs. Sutton spent the week end at the home of friends in New Haven where there was gathered a group of the history teachers of the city who were interested in the work going on in Geneva at the League Assembly and Council meetings. Among the people present were: Mr. and Mrs. Neff (Mr. Neff of New Haven Normal School faculty), Mr. and Mrs. Richardson, Miss Mitchell, Mrs. Fosnocht of New Haven High School faculty, Mr. and Mrs. Richard Kitchelt. Mrs. Kitchelt is executive director of the Connecticut League Association.

Miss Baker and Mrs. Sutton were guests on Sunday night at the Wooster School for Boys. Miss Baker used an evening assembly to explain to the boys how to use their new library. This library was completely arranged by Miss Baker during the summer months.

Mr. Finch will speak at the Hartford and Norwich State Teachers Association meetings this coming week end.

Mrs. Farnam entertained over the week end Mrs. R. C. Robinson and daughter Miriam from New York City, and also her brother-in-law Leo and sister-in-law Alice Farnam.

Genesis 3:8

Does God still walk in the garden,
At the close of the busy day?
Does He look at each bright-colored
flower,
That blossoms along the way?

Does He pause at the bed of white roses,
And stop by the phlox so gay,
If He walks in this modern Eden,
As the sky turns from blue to gray?

Yes, God must walk in the garden,
As the sun sinks behind the hill,
And perhaps He talks to His children
In the cool of the evening, still.

Else why do our hearts grow so peaceful,
And our cares seem to fade away,
If God stays up in His Heaven,
At the close of the busy day?

History
Poculiar Answers

Give examples:

- A patriot -- Benedict Arnold
- A party plank -- A platform
- American general in World War -- George Washington
- A French colony in colonial days: Rhode Island
- A "dark horse" -- Speaking overtime in Congress
- A man of letters -- A doctor

Definition of:

- Propaganda -- State of disorder
- "Open door" policy -- Admit goods with no tariff

What the Juniors Think

Asia can support more people than all the other countries combined, because large areas of the tundra have few people.

(2) Because most of the people of Asia engage in manufacturing and exchange their products with other countries for food.

Many immigrants are coming to northern Australia from China and Japan.

Glasgow is situated on the Elbe.

Salton Sink is in Palestine.

Bombay is on the Red Sea.

Portugal borders the Mediterranean Sea.

Pittsburgh is on the Susquehanna River.

Gems of Information
Gleaned from Seniors

A silo is a container of canned goods for cows.

Discovered -- a successful squirrel and an unharmed woolly deg.

Photosynthesis may be applied to animals.

Miss Munro: What should one do when she is guarded too closely by the guard?

Senior: Point!

Rest of Class: Too Hoc!

One section of seniors had a chance to observe at first hand the evil effects of a current "movie" comedy -- "b-b-b-bird t-t-t-tails".

"Belle-Mere"

Kathleen Norris' "Belle-Mere" is worth the time spent reading it. Well written, poised, it portrays a situation into which any woman might be thrust.

It is the story of a young girl who had always been somewhat shielded; she married a young doctor whose mother intended to hold her place as the most important person in the household. Step by step we see the experiences through which the young wife passed to emerge victorious over her mother-in-law.

The story is not one-sided. There are four "belle-meres", each as different and yet as alike as four people can be, thus giving a fair-minded crossview of that somewhat justly maligned specie of womankind.

We Wonder

Whether Miss Townsend's tests have more arithmetical or psychological results?

Why the occupants of Room 31 are hostesses at a banquet every Sunday night?

Why two certain Senior D's giggle so spontaneously?

Why a certain door on the first floor of the "dorm" was oiled?

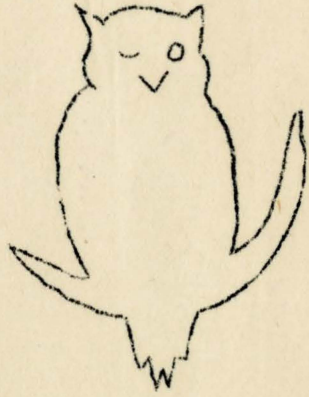
Who borrowed end tables from Room 37?

Where the straw chair from the library disappeared Wednesday night?

Why the "Three Musketeers" play "barnyard golf" in back of the school? (For worthy use of leisure time?)

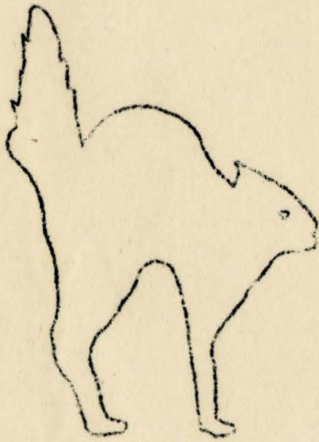
How Rog can eat with her face turned toward the northwest?

W



S

N



HALLOWEEN

MES.