

10/10/10

DANBURY

CONNECTICUT

DANBURY

CONNECTICUT





VIEW OF DANBURY FROM THE NORTH, RIDGEWOOD COUNTRY CLUB IN FOREGROUND

DANBURY, A THRIVING CONNECTICUT CITY OF DISTINCTIVE CHARM

DANBURY, the Gateway to New England, a prosperous, progressive city of 27,000 people, is charmingly located in a setting of mountains and lakes in the southwestern corner of Connecticut, where the foothills of the Berkshires begin to merge with the gradually sloping hinterland of the Long Island Sound shore.

Although within twenty-five miles of tidewater and included in the metropolitan area of New York City, its lowest altitude is 400 feet above sea level, several of its handsome residential thoroughfares are more than 500 feet above sea level, and its encircling hills, sloping to the borders of the city, rise to altitudes of more than 1,000 feet.

Though a busy manufacturing center, it is also a city of attractive homes. Its principal business streets are broad and handsome. It has twenty-five miles of paved streets and avenues in residential sections and

many miles of well-kept thoroughfares surfaced with gravel, and shaded by magnificent elms and handsome maples.

Danbury is ideally situated with reference to travel and shipping facilities. Sixty-five miles from the Grand Central Terminal, New York, the metropolis may be reached by fast express trains on the New York, New Haven & Hartford Railroad, running via South Norwalk. The suburban train service of the Harlem division of the New York Central Railroad is available at Brewster, N. Y., ten miles from the center of the city. The Berkshire Hills line of the Danbury Division of the New Haven system extends to Pittsfield, Mass., ninety miles north. Another line of the New Haven system, with terminal points in Danbury, extends to the Hudson river and Maybrook, N. Y. on the west, and to Waterbury, Hartford, and Boston, eastward. Danbury is the southern terminus of the Litchfield



CITY HALL SQUARE



BUSINESS SECTION OF MAIN STREET



WEST LAKE RESERVOIR

branch of the same system. Branches of the Danbury Division also extend eastward to Bridgeport and New Haven.

Rail traffic is supplemented by motor bus lines of the New England Transportation Co., northward to Canaan, southward to South Norwalk and eastward to New Haven. Independently operated motor bus lines connect with Bridgeport, New York, Pittsfield, Poughkeepsie, N. Y., Waterbury and Ridgefield and Brewster, N. Y.

The center of the hat manufacturing industry in the United States, the city has more than fifty factories engaged in the production of fur felt and straw hats and allied products, including hatter's materials, machinery and supplies. Other manufactories produce a wide variety of articles, including silks, electrical goods, metal wares, electric light fixtures, insulating materials, general machinery, underwear, electric trucks, ball and roller bearings, paper boxes, cigars, glue, cutlery, felt, etc.

The city is the principal trading center of southwestern Connecticut and adjacent sections of New York State. Its shopping and marketing facilities are unsurpassed.

Educational, church and recreational facilities are excellent. A new high school building modern and complete in construction and equipment has just been erected, at a cost of a half million dollars. Grade schools, public and parochial, rank with the best in the state. The State Normal School, for which a \$200,000 dormitory is just being completed, a finely equipped State Trade School, Wooster School for Boys and other private schools provide broad opportunities for vocational and special education. A splendid recreation ground is being created in connection with the High School. Danbury also has an aviation field under construction.

The city has fifteen churches of various denominations, an excellent public hospital, four strong, successful banking institutions. Total savings deposits over



POST OFFICE



PUBLIC LIBRARY



THE DANBURY CLUB



DANBURY HIGH SCHOOL



NORMAL SCHOOL DORMITORY



STATE NORMAL SCHOOL

\$20,000,000, and increasing at the rate of over \$1,000,000 a year. Total commercial clearings in 1926 were \$87,359,056. A Building and Loan Association with assets of over a half a million dollars. Also two daily newspapers, three commodious theatres, splendid public library, a completely motorized fire department of ten companies, an efficient police department, a municipally owned public water system supplied from six reservoirs.

The Danbury Fair, the fame of which is country-wide, is one of the city's established institutions and annually attracts more than 100,000 visitors. It opens the first Monday in October and continues through the week.

The Ridgewood Country Club, occupying the former Ridgewood Stock Farm of 100 acres, has every facility of a high class country club, including an eighteen-hole golf course splendidly kept and of rare scenic beauty.

The surrounding country, rolling, rich in agricultural resources, its hills heavily wooded and its lakes aquatic

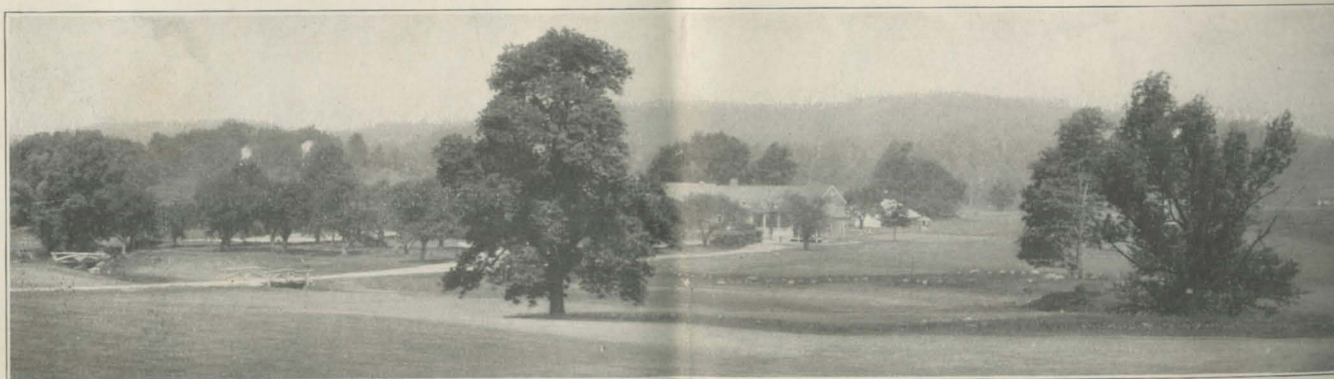
gems in settings of emerald hills, is ideal for vacation recreation, or as a place of summer homes.

Danbury will bid welcome with open-hearted hospitality the visitor, tourist, vacationist, home-seeker or employment-seeker, and offers advantages and opportunities that it believes few other cities can equal to the industry seeking a location in territory adjacent to New York and convenient to the great markets of the East.

DANBURY AS A CITY OF HOMELIKE HOMES

IF you are interested in Danbury as a city of homes, consult the Danbury Merchant's Association, the Advertising Club of Danbury or the Danbury Real Estate Board.

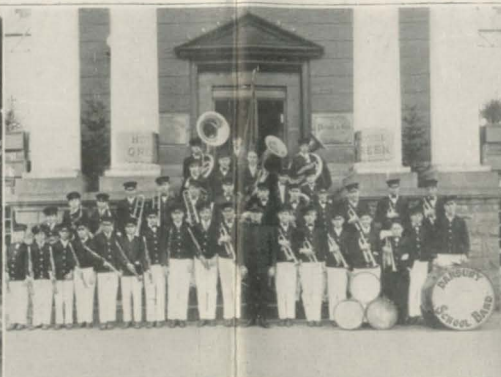
Danbury is an ideal place of residence. It possesses practically all the advantages of any modern, well-



THE RIDGEWOOD COUNTRY CLUB



AMERICAN LEGION HOME



DANBURY SCHOOL BAND



BEGINNING OF THE BERKSHIRE TRAIL

governed city, with the quiet and charm of the country. It is a city of comfortable homes, fine broad streets, splendid stores, excellent schools and churches and friendly, hospitable people.

Whether you want an all-the-year round home, or a restful retreat for the summer, where you may have at your service the conveniences of the city, Danbury can meet your needs.

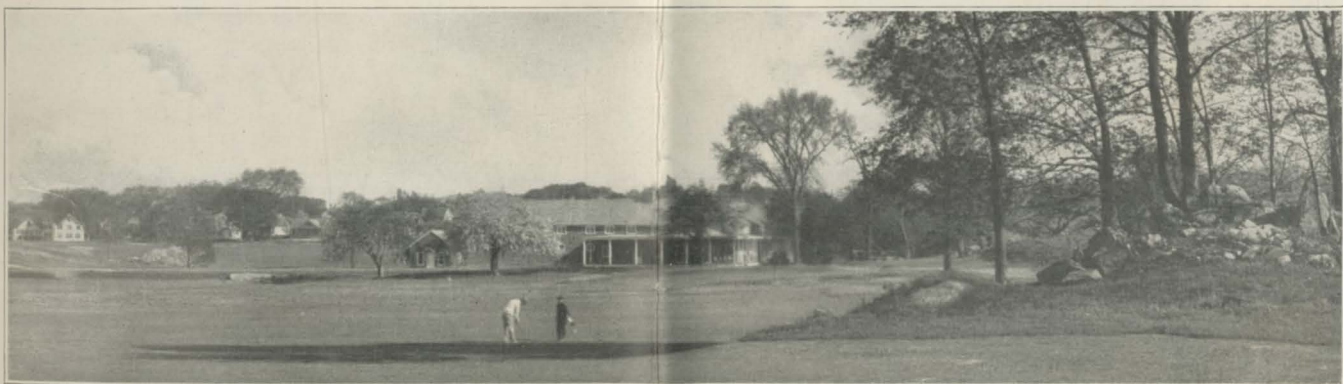
Danbury is within easy rail or motor distance of New York and other large centers. The Bronx and Westchester Parkway is soon to be extended to within a few miles of this city. There is now a choice of half a dozen attractive motor routes into the metropolis.

No section of the country is surrounded by a more delightful countryside or possesses a greater number of beautiful scenic drives. Beautiful lakes with wooded shores abound in this locality. Lake Danbury, the largest and most beautiful body of water in Connecticut, formed by the construction of a great hydraulic power reservoir winding in and out among the hills

and mountains of the lower Berkshires, will be fourteen miles long, its southern point extending close to the Danbury city line. This great basin soon to be filled, will make the country roundabout Danbury more than ever a summer paradise.

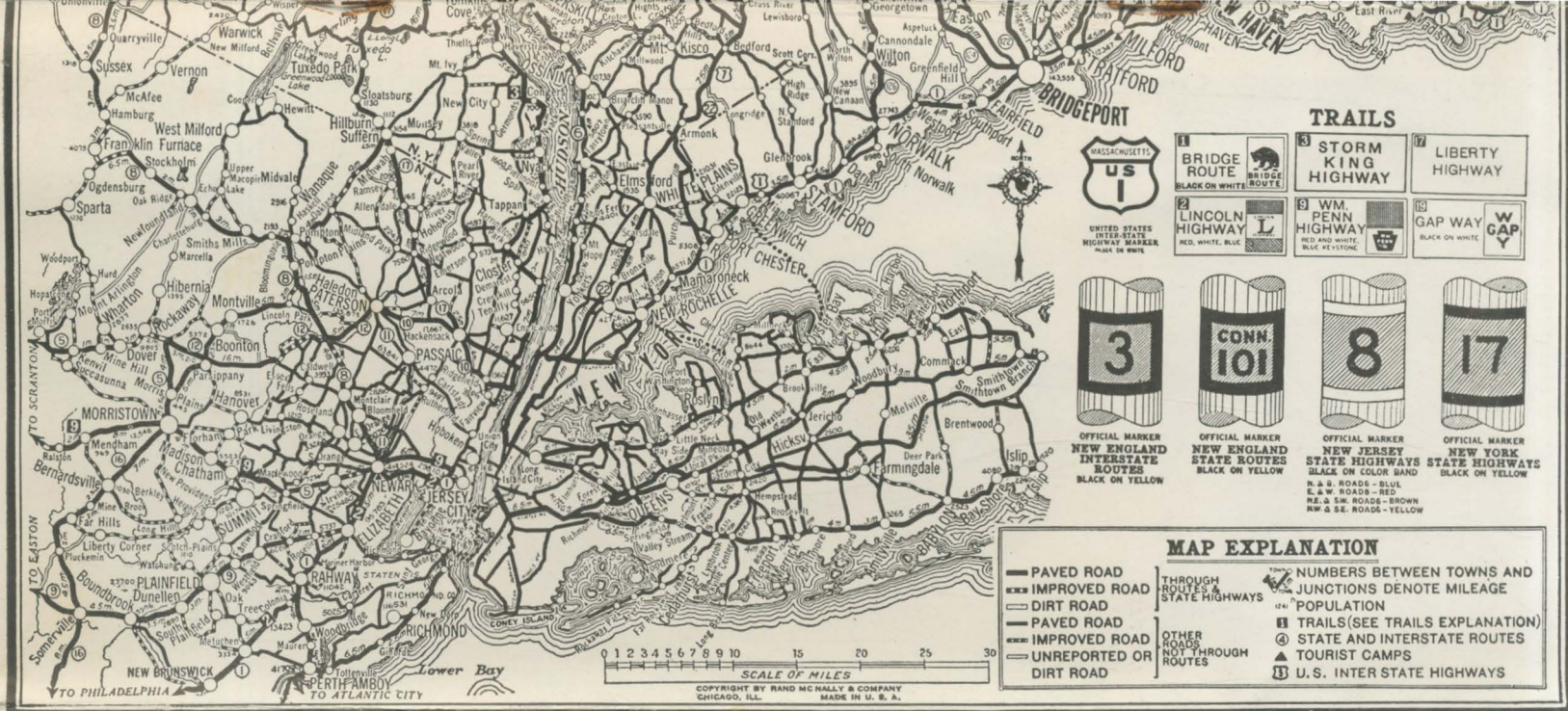
Scores of other lakes, among them Lake Zoar and the wooded shores of the Housatonic, Lake Mahopac, Lake Waramaug, Bantam Lake, Lake Waccabuc, Spectacle Lakes, Lake Hallahwah and the great reservoirs of New York city's Croton watershed are within easy driving distance of Danbury. Several delightful bathing and cottage resorts on Long Island Sound are only an hour's motor drive away.

Many desirable homes are available in Danbury and in the surrounding country, of which this city is the center, it is still possible to find many charming old places that may be acquired as country homes, along the lakes and streams, as well as on the hillsides and in the open stretches of country ideal bungalow and camp sites are available.



THE RIDGEWOOD COUNTRY CLUB





THE HOTEL GREEN, JOHN HARRIS, MANAGER
"A HOTEL PAR EXCELLENCE"

"THE GATEWAY TO NEW ENGLAND"

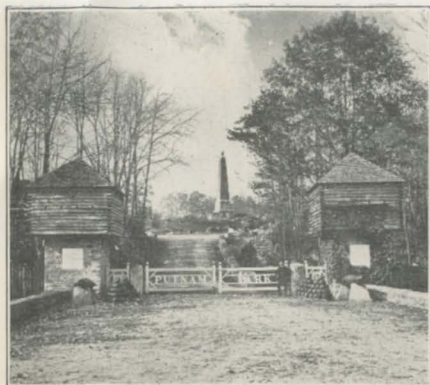
The completion of the Bear Mountain Bridge spanning the Hudson River, 40 miles west of Danbury, established the city as "The Gateway to New England." Practically all traffic from both the South and West enters Danbury before distributing itself throughout New England.

Commencing at Danbury the beautiful Berkshire Trail, winding northward mile after mile through wonderfully picturesque scenery, leads to the Berkshire Hills.

To the east, fine paved roads traverse the typical rolling hills of Connecticut to Waterbury and Hartford and on to Springfield and Boston.

Twenty-two miles south of Danbury lies Long Island Sound. A new concrete highway connects Danbury with the beaches and pleasure resorts along the coast.

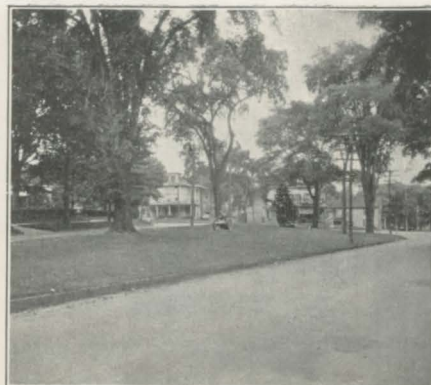
Danbury, itself, is replete with interesting and beautiful spots, all accessible by good roads.



ENTRANCE TO PUTNAM PARK



VIEW NEAR PUTNAM PARK



EAGLE PARK



THE SAVINGS BANK OF DANBURY, CONNECTICUT



THE CITY NATIONAL BANK OF DANBURY
DANBURY NATIONAL BANK



THE UNION SAVINGS BANK OF DANBURY



MASONIC TEMPLE



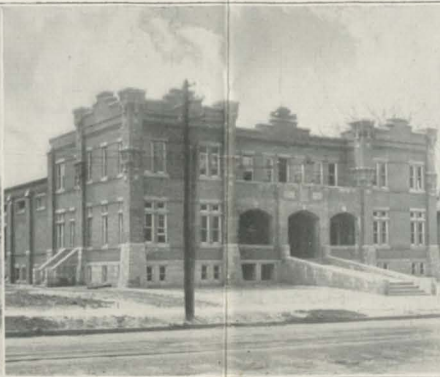
K. OF C. HOME



ODD FELLOWS BUILDING



DANBURY HOSPITAL



STATE ARMORY



COUNTY COURT HOUSE

DANBURY AS AN INDUSTRIAL CENTER

IF you are interested in Danbury as an industrial center; if you wish to know more about its opportunities and the things it has to offer the manufacturing or business concern seeking a location in this section of the country, write the Danbury Merchant's Association, The Advertising Club, or the Danbury Real Estate Board. If you chance to be passing through our city stop and look us up. We will welcome you. We will be glad and proud to show you the city and what it has to offer.

Taxes in Danbury are relatively low, desirable factory locations are relatively reasonable in comparison with those of larger manufacturing centers, and production costs are lower, because of these and other favorable factors.

Danbury is a busy, happy, peaceful, prosperous, progressive manufacturing city. We make hats—more of them than any other city in the United States,

more probably than any other city in the world. "Danbury Crowns Them All" is our industrial slogan. Danbury crowns them well, too. The quality of the products of our hat factories justifies that assertion. No better hats are made than those produced by Danbury factories.

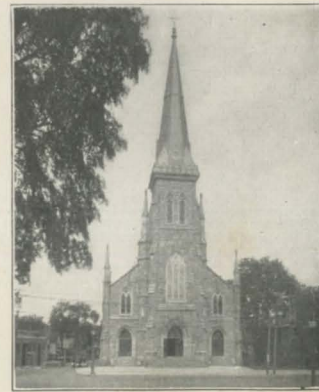
Hats do not constitute our sole manufacturing interest, however. We have many other industries. We make a wide variety of goods. Our factories engaged in other lines of production are as busy and prosperous as those that make hats. We wish to add to our industries, to diversify our products further. We are close to some of the greatest markets in the country. Our shipping facilities are excellent. Our constantly growing program of building is providing additional homes for workers. Few cities can offer more attractive inducements, more wholesome environment, better business and living conditions.



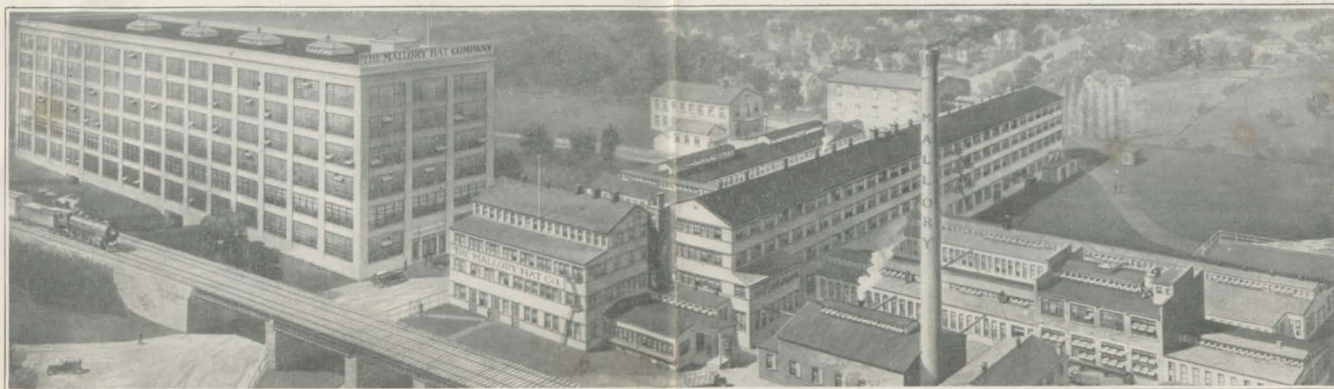
FIRST CONGREGATIONAL CHURCH



ST JAMES' CHURCH



ST PETER'S CHURCH



THE MALLORY HAT CO.

DANBURY, CITY OF HATS

DANBURY, today, is one of those highly concentrated communities that stand for definite, intensive things. Just as Pittsburg means Steel, and Akron means Rubber, so DANBURY stands synonymous with Hats.

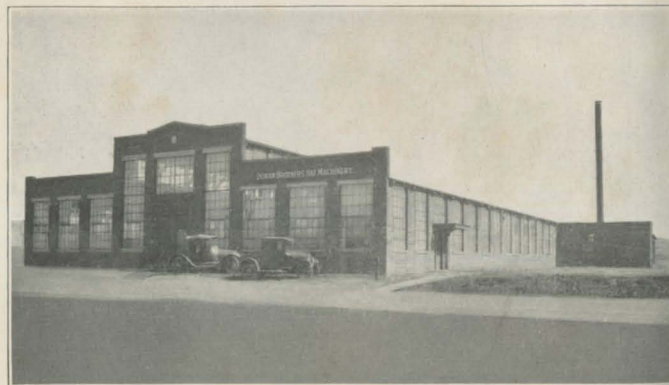
The MALLORY product, embracing fine felt and straw hats for men and women, has been a leading factor in giving it this distinction since 1823.

MALLORY HATS have been made and distributed from Danbury. MALLORY salesmen have been carrying the message of DANBURY to the outside world. Unceasing advertising, forceful and out-standing in the leading Magazines, Trade Papers, and Dailies have made THE MALLORY HAT COMPANY, Danbury, Conn., the best known national advertiser of hats in the country and have kept MALLORY and DANBURY continuously in the public mind.

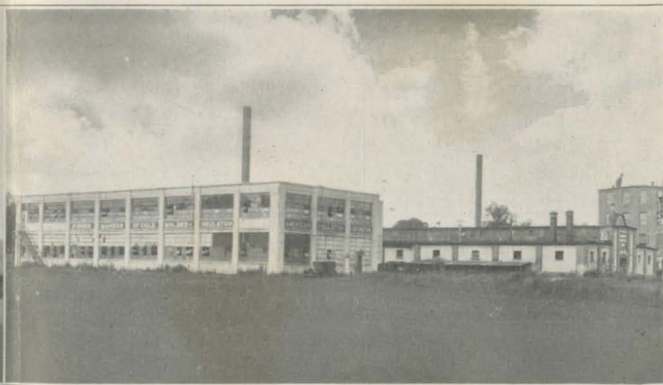
DORAN BROTHERS are patentees and builders of the most highly developed automatic fur hat making machines used in the hat industry. The firm's

factory building and its mechanical equipment is the most modern in the country devoted to the development and manufacture of fur felt hat machinery.

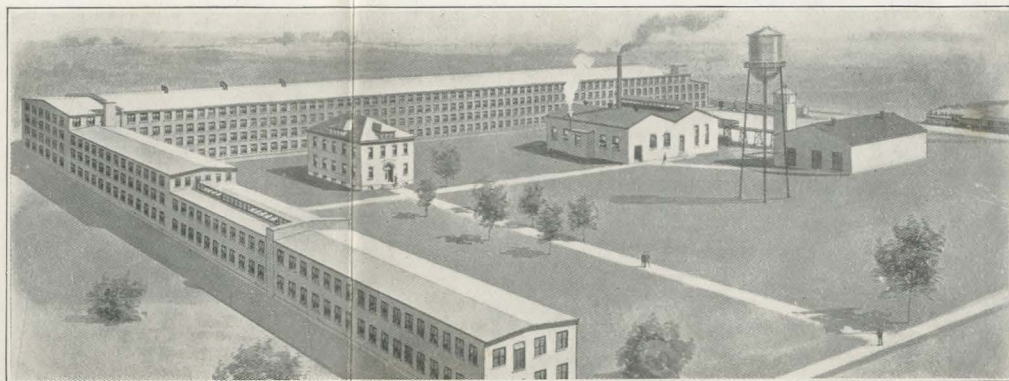
THE AMERICAN INSULATOR CORPORATION, manufactures molded composition parts for electrical wiring devices and for almost all electrical insulating purposes. In its hot molding division the plant produces articles manufactured from a material known to the trade as Bakelite, which is used not only for electrical insulation purposes, but in various other industries, for such purposes as chemical and cosmetic containers, gear shift control balls and many other automobile purposes. The American Insulator Corporation occupies 45,000 square feet of floor space and employs in excess of 200 people.



DORAN BROS., HATTING MACHINERY



THE AMERICAN INSULATOR CORP.



THE FRANK H. LEE CO.

THE FRANK H. LEE COMPANY, manufacturers of men's fur felt hats, employing 900 persons, is one of the industrial bulwarks of Danbury. Its payroll is a substantial factor in the material progress of trade and prosperity with which the city is favored. Mr. Frank H. Lee, the president and guiding spirit of the company, began manufacturing hats more than thirty-five years ago, and under his direction the business has grown until the output of men's felt hats, finished and in the rough, is approximately thirteen thousand per day, while straw hats, which the company began to make four years ago, are now turned out at the rate of 200 dozen per day during the straw hat season.

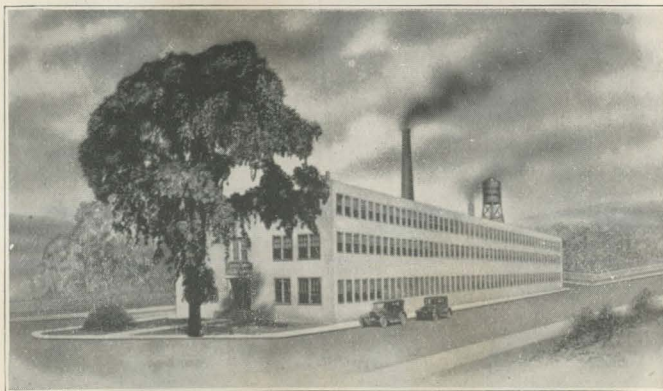
Lighting fixtures manufactured by CEPHAS B. ROGERS have a reputation for beauty of design and finish which has created a rapidly growing demand from all parts of the United States and Canada. Installations have been made in prominent buildings and

fine residences throughout the country. They were selected for meritorious design by the Home Owners Institute, for their National Model Homes demonstration which was sponsored by prominent newspapers in fifty leading cities.

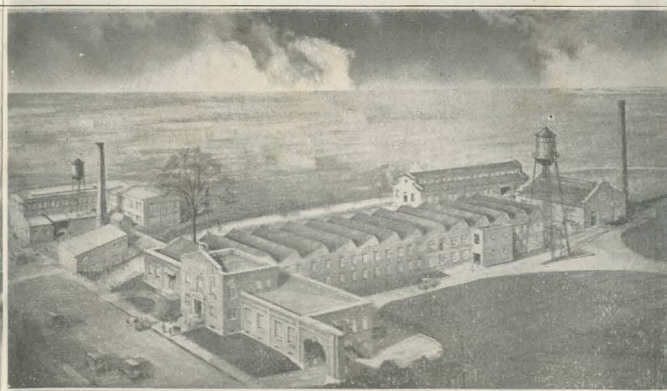
The ideal location of Danbury as a trade center is well illustrated by the large number of out of town visitors who call at the Danbury showrooms of this concern.

TWEEDY SILK MILLS, Inc. are manufacturers of silk hat bands. Not many years ago hat bands were almost entirely imported from abroad, but due to persistent effort this adjunct to the hat industry is now established in this country on a firm basis which is a great help as well as convenience to Danbury and the hat industry.

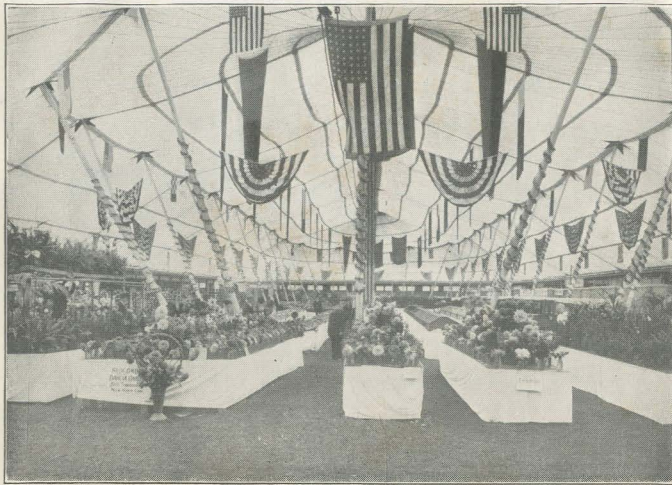
The TWEEDY SILK MILLS are one of the largest and most up-to-date hat band manufacturers in United States.



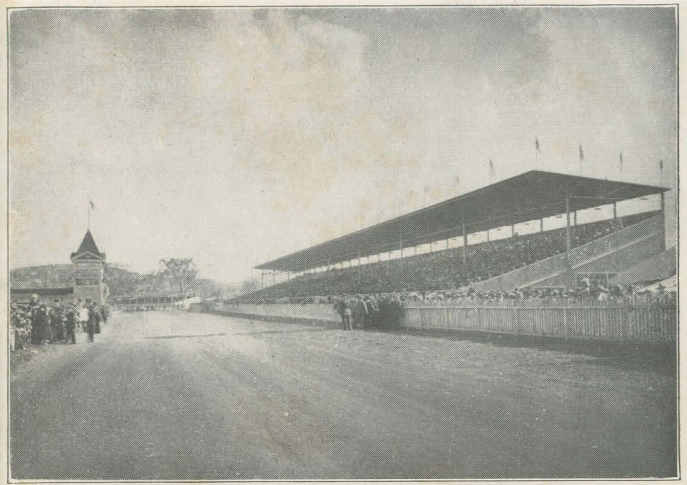
CEPHAS B. ROGERS, LIGHTING FIXTURES



TWEEDY SILK MILLS



INSIDE THE BIG TENT AT THE DANBURY FAIR



GRANDSTAND AND RACETRACK AT THE FAIR

DANBURY OFFERS YOU

A charming, homelike city.

High elevation, pure, invigorating air, healthful surroundings.

Country drives of surpassing beauty.

Fine city streets and country roads.

Excellent public and private schools, a new half-million dollar high school, a state normal school, a state trade school.

Some of the most picturesque mountain and lake scenery in southern New England.

A charming country club with a splendidly maintained eighteen hole golf course.

Railroad and motor bus service extending in every direction.

One of the finest municipally-owned water systems in Connecticut.

A splendid public library.

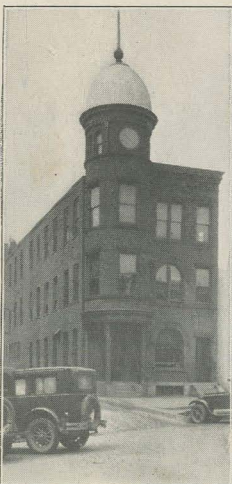
Wide opportunities for business or employment.

Unexcelled shipping facilities.

A score of beautiful lakes within easy driving distance.

All the advantages of a modern, progressive city, with the quiet and wholesomeness of country life.

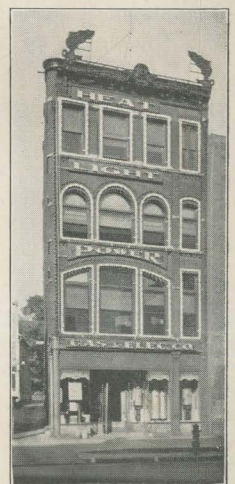
Enterprising, well informed business organizations ready to assist you in finding what you wish if you desire to locate here.



THE DANBURY NEWS



THE MARTHA APARTMENTS



OFFICE OF
DANBURY AND BETHEL
GAS AND ELECTRIC CO.